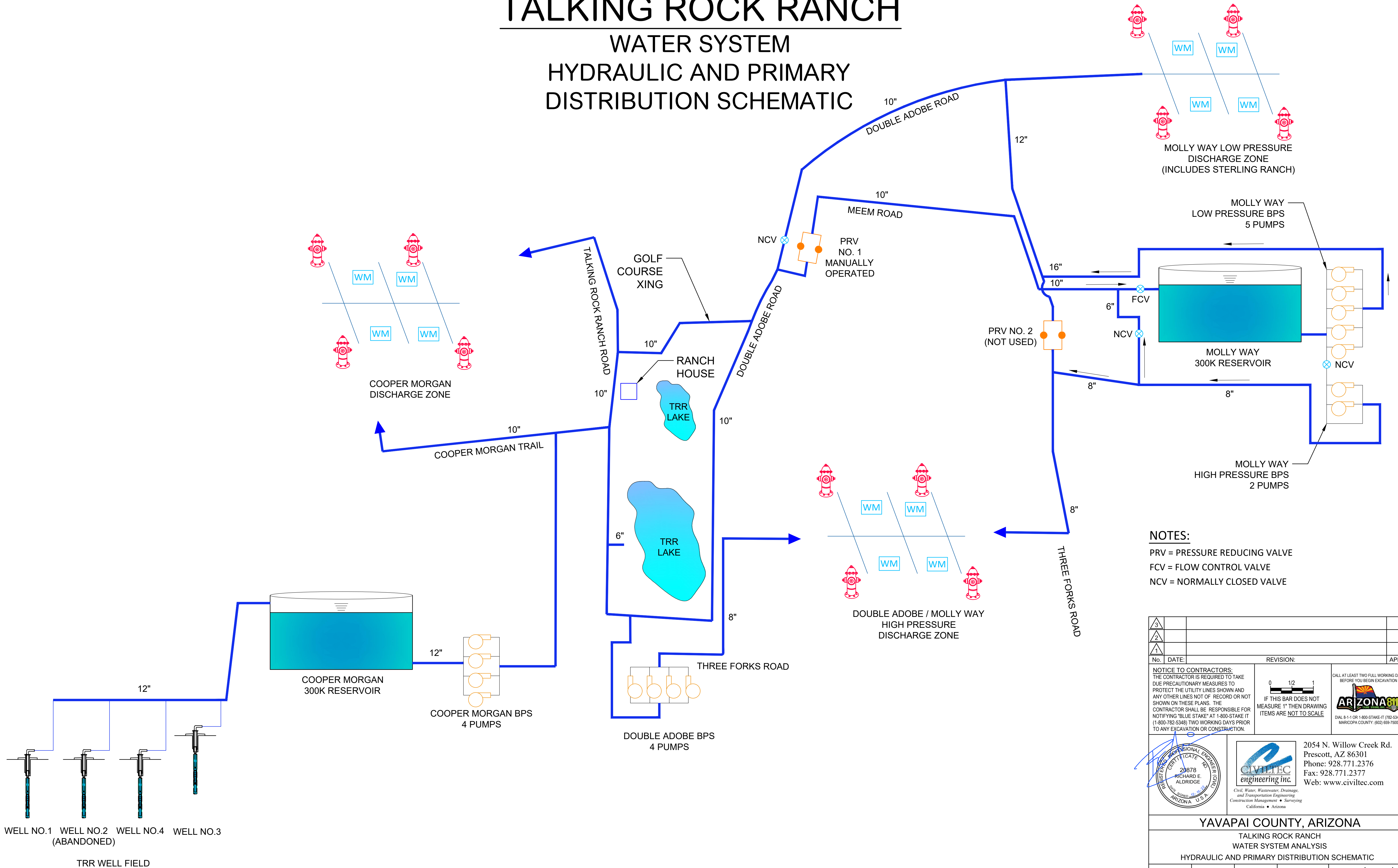


TALKING ROCK RANCH

WATER SYSTEM

HYDRAULIC AND PRIMARY DISTRIBUTION SCHEMATIC



NOTES:
 PRV = PRESSURE REDUCING VALVE
 FCV = FLOW CONTROL VALVE
 NCV = NORMALLY CLOSED VALVE

| No. | DATE | REVISION | APP. |
|-----|------|----------|------|
| 3 | | | |
| 2 | | | |
| 1 | | | |

NOTICE TO CONTRACTORS:
 THE CONTRACTOR IS REQUIRED TO TAKE DUE PRECAUTIONARY MEASURES TO PROTECT THE UTILITY LINES SHOWN AND ANY OTHER LINES NOT OF RECORD OR NOT SHOWN ON THESE PLANS. THE CONTRACTOR SHALL BE RESPONSIBLE FOR NOTIFYING "BLUE STAKE" AT 1-800-STAKE-IT (1-800-782-5348) TWO WORKING DAYS PRIOR TO ANY EXCAVATION OR CONSTRUCTION.

0 1/2 1
 IF THIS BAR DOES NOT MEASURE 1" THEN DRAWING ITEMS ARE NOT TO SCALE

CALL AT LEAST TWO FULL WORKING DAYS BEFORE YOU BEGIN EXCAVATION
ARIZONA 811
 DIAL 8-1-1 OR 1-800-STAKE-IT (782-5348)
 MARICOPA COUNTY: (602) 659-7500

20878
RICHARD E. ALDRIDGE

CIVILTEC
engineering inc.

Civil, Water, Wastewater, Drainage,
and Transportation Engineering
Construction Management • Surveying
California • Arizona

2054 N. Willow Creek Rd.
 Prescott, AZ 86301
 Phone: 928.771.2376
 Fax: 928.771.2377
 Web: www.civiltec.com

X:\2021\2021744-00-NCVC-Design-Review-and-Operations-Enhancement\DWG\Sheets\ER\AbandonHydraulicSchematic.dwg | 12/19/2022 1:32 PM